

PL-2518 Turbo Hi-Speed USB Flash Disk UFD Utility User's Manual

**For AP v2.10.0.0 Release
For Windows 98/ME/2000/XP**

Version 1.1B (08/27/2004)

Contents

Contents	1
Introduction	1
Features & Specifications	2
System Requirements	2
Using Your Hi-Speed USB Flash Disk	3
Generic USB Hub Driver Installation	6
USB Flash Disk Utility Program	7
Uninstalling the USB Flash Disk Utility	15
Disclaimer	15

Introduction

Congratulations on your purchase of this Hi-Speed USB Portable Flash Disk! This Hi-Speed USB Flash Disk is your friendly, secure, and lightweight removable mass storage device disk. It plugs thru the USB port so your computer will quickly detect and configure the disk without needing to restart the computer. You read, write, copy and delete files just the same way as you use a disk drive. And since it is a large capacity disk, you can also play MP3 files, run program applications or play videos directly from the disk.

This Hi-Speed USB Flash Disk is so light and compact that you can carry it with you anywhere. It comes in various large storage capacities starting at 32MByte up to 8GByte. It is so easy to install that you can actually use it to replace your floppy diskettes, ZIP drives, MO drives, and even CD-RW discs. And because it uses durable solid-state storage flash memory, it has no moving parts inside making it shock resistant and longer to use.

This Hi-Speed USB Flash Disk also provides great flexibility and data security with disk partitioning and password security features. The USB Flash Disk (UFD) Utility allows you to easily create and configure one or two-partition drives – an open partition drive with no password and a secured partition drive with password access option. The secured partition drive allows you to place your important files in it and protect it from being accessed by setting a password to hide the drive. Any access to this secured partition drive then would require first to run the security utility and enter the correct password to unlock the drive.

Features & Specifications

- Smart and secure removable data storage for business and personal use
- Full Compliance with the Universal Serial Bus Specification v2.0 and v1.1
- Offers different sizes from 32MB to 8GB capacities
- Data Write-Protect Switch
- Hi-Speed Read Performance of up to 20MBytes/sec*
- Hi-Speed Write Performance of up to 15MByte/sec*
- Mass Storage Device class compatible so no driver needed in Windows ME, 2000, XP, Mac 9.1 or above. Includes manufacturer driver for Windows 98.
- USB Flash Disk Utility Program for security and partitioning functions (No additional drivers needed)
- Bus Powered – no separate power supply or battery required
- State-of-the-art NAND Flash Memories
- Shock resistant, noise-free and longer data retention
- Advanced power management mechanism
- Dimensions L x W x H: _____ (mm)
- Weight: ____grams (approximate)



Note: The read/write performance of your USB Flash Disk will depend on the Flash memory type inside your device and also on your computer's CPU and system memory configuration.

System Requirements

- Windows 98, ME, 2000, XP, Mac OS 9.1 or above
- AMD or Intel Pentium 133MHz or better based computer
- Built-in USB 1.1 or Hi-Speed USB 2.0 port



Note: If you are running Windows 2000 or Windows XP and your computer has a Hi-Speed USB 2.0 port, it is advised that you install the Windows Service Pack. Please refer to the Microsoft Knowledge Base article website:
<http://support.microsoft.com/default.aspx?scid=kb;en-us;312370>



Note: You can purchase a Hi-Speed USB 2.0 Host PCI add-on card if your desktop computer does not have a built-in USB port. If you are using a Notebook PC, you can purchase a Hi-Speed USB 2.0 Host PCMCIA card.

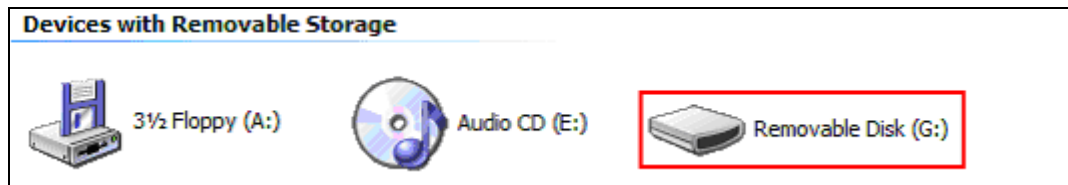
Using Your Hi-Speed USB Flash Disk

To use the Hi-Speed USB Flash Disk, you simply plug it into your computer's USB port. Windows ME, 2000, XP and above versions all support the Microsoft USB Mass Storage driver needed to detect and run the device. However, if you have a Windows 98, you will need to run the USB Flash Disk Utility Setup that will also install the needed USB mass storage driver. The UFD Utility program allows you to make use of the security and partitioning features of the Hi-Speed USB Flash Disk. Refer to the section of this manual for installing the USB Flash Disk Utility program.

If you want to know more about USB, you can go to <http://www.usb.org/faq/>.

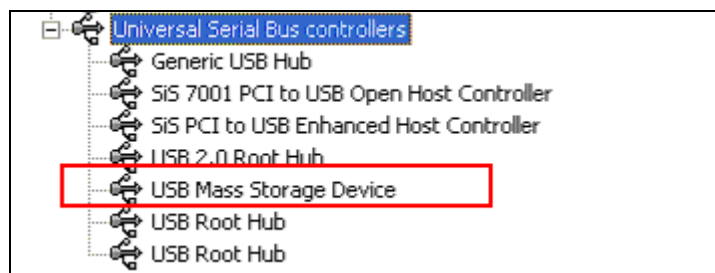
Plugging the USB Flash Disk

Once you plug in your Hi-Speed USB Flash Disk, Windows will assign a drive letter to the device and will usually designate it as a Removable Disk. You work with the drive just like another disk drive or floppy diskette. Click My Computer to see all the available drives in your computer.

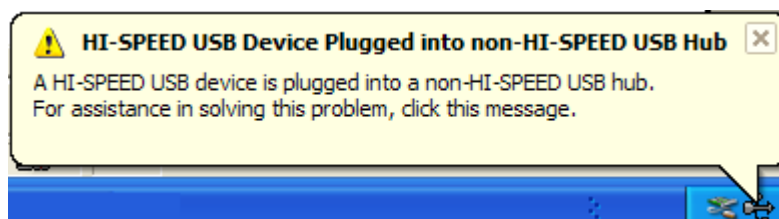


Note: If Windows prompt you for the Generic USB Hub driver when you plug in the device for the first time in a Hi-Speed USB 2.0 port, you simply direct the USB host driver location to the C:\Windows\System32\Drivers directory.

To make sure if the device is properly installed, click Start-Control Panel-System-Device Manager and go to the Universal Serial Bus Controllers. Check if there is USB Mass Storage Device and Generic USB Hub installed.



This Hi-Speed USB Flash Disk is a Hi-Speed USB 2.0 compliant device and is recommended that you plug it into a Hi-Speed USB 2.0 port. Whenever you plug the disk into a non-Hi-Speed USB port, Windows will show an alert message at the taskbar telling you that it is plugged into a non-Hi-Speed USB hub. You can still continue to use the disk but it will run at a reduced speed.



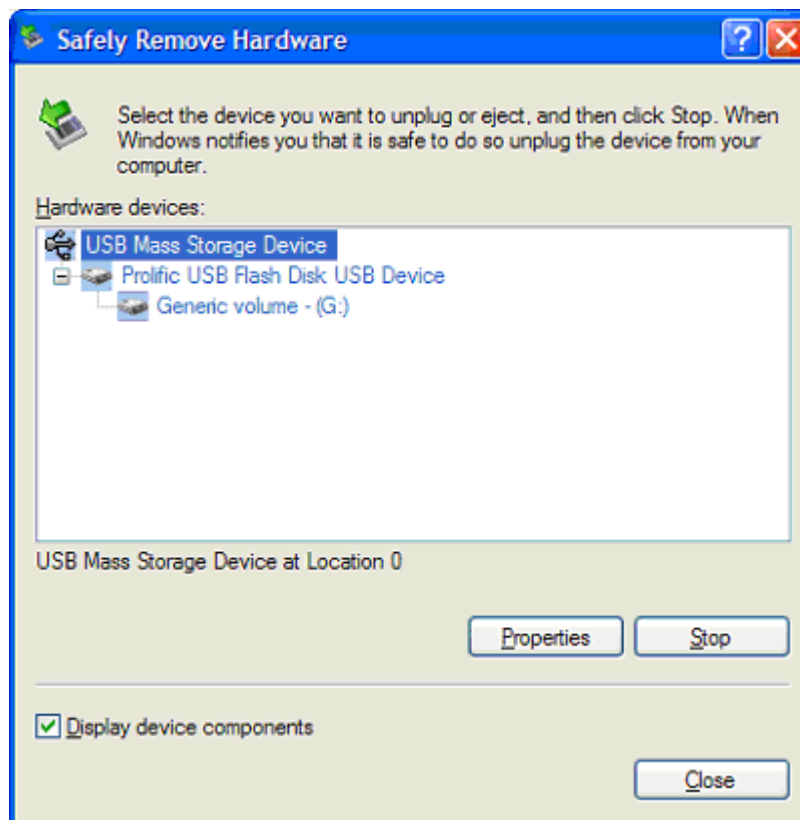
Unplugging the USB Flash Disk

To properly unplug the USB Flash Disk, you must double-click on the Safely Remove Hardware icon found on the right side of the taskbar to stop the device.



Note: It is highly advisable that you safely remove the device first before you unplug especially after copying files since Windows includes write caching features. Safely removing the device ensures that files are properly in place before Windows allows you to unplug the device.

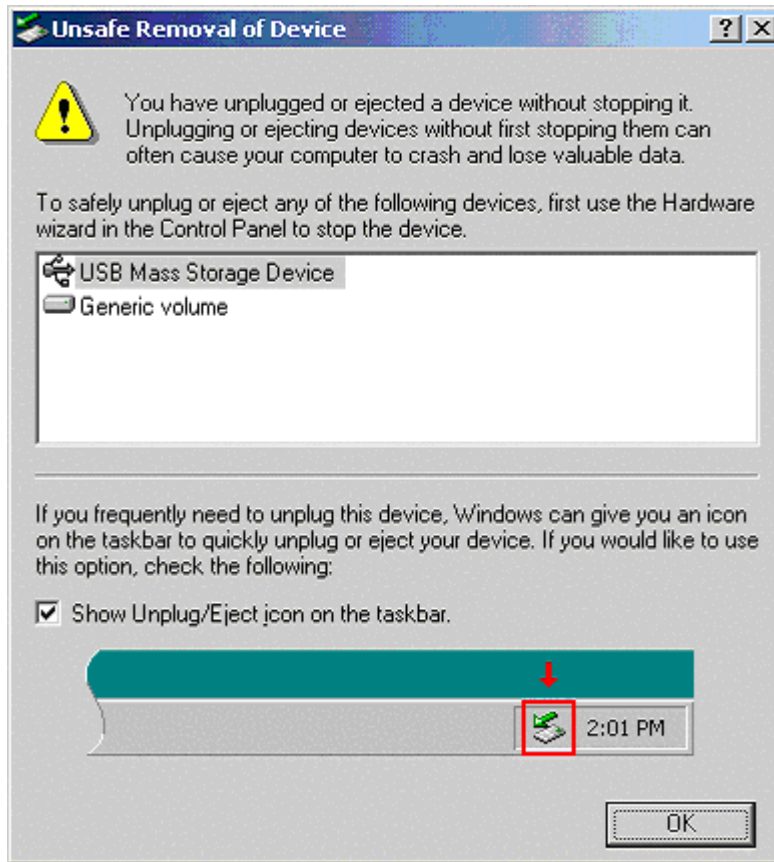
Click on the USB Mass Storage Devices and click the Stop button to safely remove the device. You can also click first on the Display device components to show the detailed information of the USB Mass Storage Device.



Once you have safely removed the device, Windows will then show that the USB Mass Storage Device can now be safely removed. You can then unplug the disk from the USB port.



In Windows 2000 or ME, whenever you unplug the disk without safely removing it, Windows will show you a warning message that you unplug a device without stopping it and may cause your computer to crash or lose valuable data. Do not also unplug the USB Flash disk when the read/write LED of the disk is still on.



Note: Do not unplug or remove the device if the read/write LED of the Hi-Speed USB Flash Disk is on or blinking. This means that the computer is still accessing the device. Wait for the LED to turn off before you safely remove the device.

Write Protect Switch

The USB Flash Disk also comes with a user write-protect switch. This switch works very much like the floppy disk write protect switch. Turn this switch if you want to prevent the USB Flash Disk from being written.



Note: You must first safely remove the disk before you turn on or turn off the write-protect switch. It is not recommended to enable or disable the write protect switch while the disk is still plugged into the port.

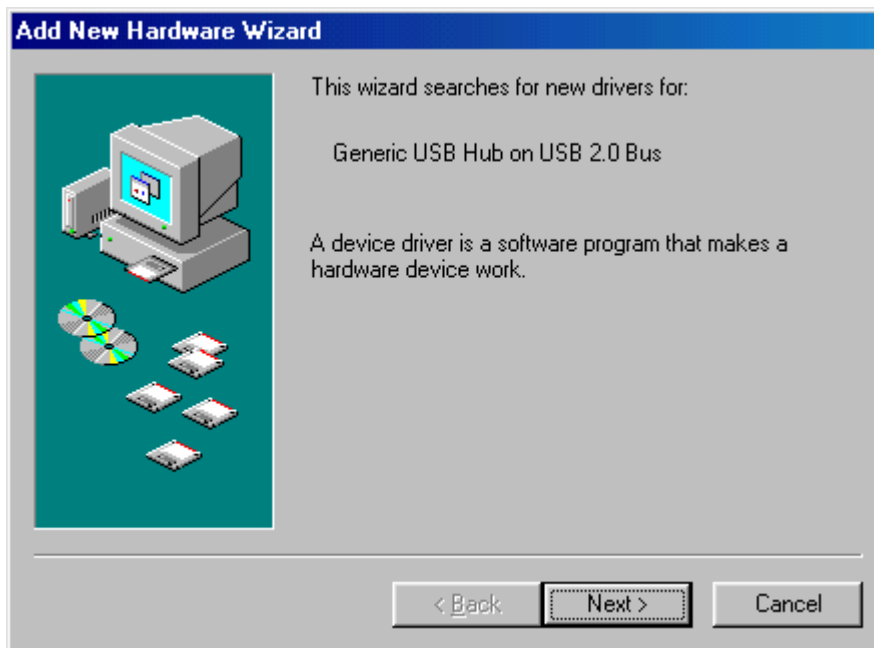
Generic USB Hub Driver Installation

The Hi-Speed USB Flash Disk integrates an embedded generic USB hub that may cause Windows to prompt for a first-time hub driver installation when you plug into a Hi-Speed USB 2.0 port.

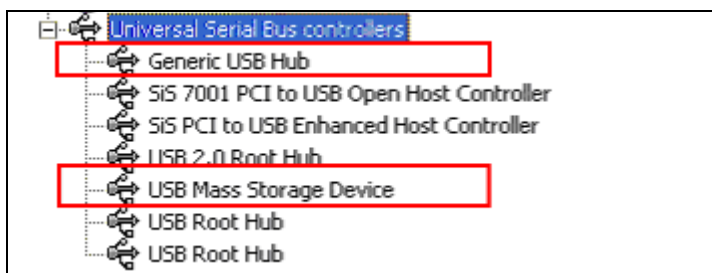


Note: If you are using Windows 98, it is required that you first install the Win98 USB mass storage driver before you plug in the device. You can run the USB Flash Disk Utility Setup program that will also install the needed Win98 driver or you install the stand-alone driver.

1. If you plug the USB Flash Disk in the Hi-Speed USB 2.0 port for the first time, Windows will first detect the Generic USB Hub on USB 2.0 Bus and may prompt you to install a driver. You would only need to use the existing USB host driver in Windows. Click Next to continue.



2. Click let Windows search for the new driver. If Windows cannot find the driver, you can specify the driver location at C:\Windows\System32\Drivers. After Windows detect the USB Host driver, it will inform you that it has finished installing the software for the new hardware device.
3. Windows will then automatically detect the Hi-Speed USB Mass Storage Device and will automatically install the drivers for you. To check if the device has been installed properly, click Start-Control Panel-System-Device Manager and check for the Hi-Speed USB 2.0 Mass Storage Device.



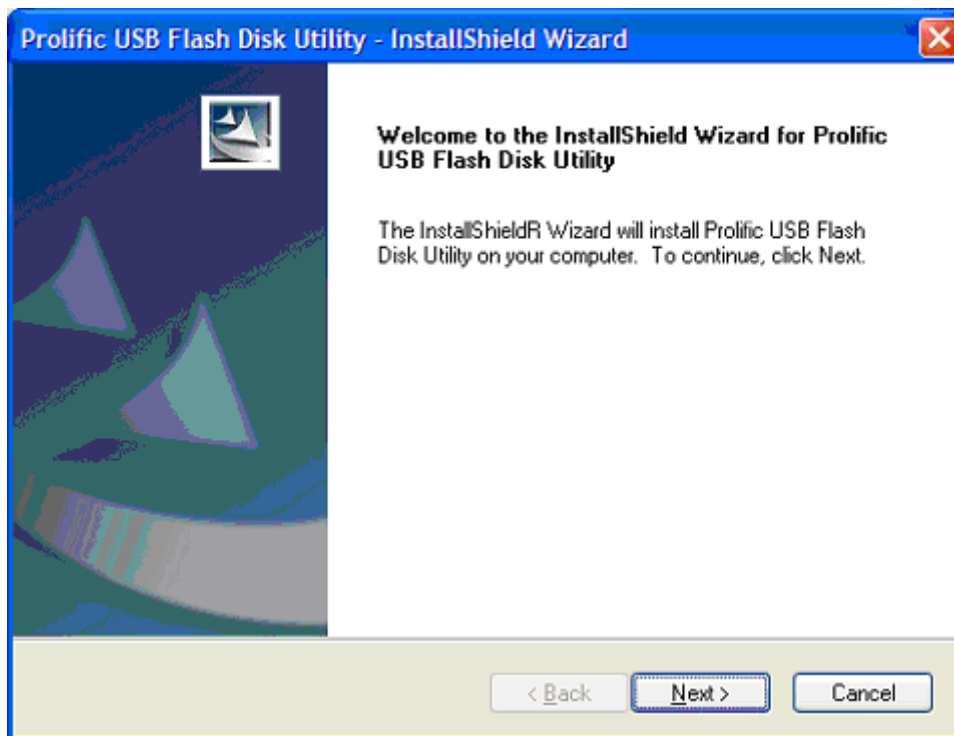
USB Flash Disk Utility Program

This section provides you information on how to run the USB Flash Disk Utility program. The Utility program allows you to set a private security password as well as disk format and partition functions.

Installing the USB Flash Disk Utility

Follow the steps below to install the USB Flash Disk Utility program:

1. Run the Setup program included together with your USB Flash Disk utility CD. If you using Windows 98, do this installation first before plugging in the device.
2. The InstallShield Wizard will then start and will prompt you if you want to start installing the USB Flash Disk Utility. Click Next to continue.



3. If there is a License Agreement (EULA) window appearing, you need to read and accept it before the installation can proceed. InstallShield Wizard will then start to install and copy the needed files and programs into your computer. Click the Finish button when InstallShield Wizard prompts you that the installation is complete.
4. When installation is complete, check if there is a program shortcut created on your desktop screen for the USB Flash Disk Utility program.



5. Check also your Program folder by clicking Start-Programs and see if there is a USB Flash Disk Utility program folder created. See next section on how to use the utility program.

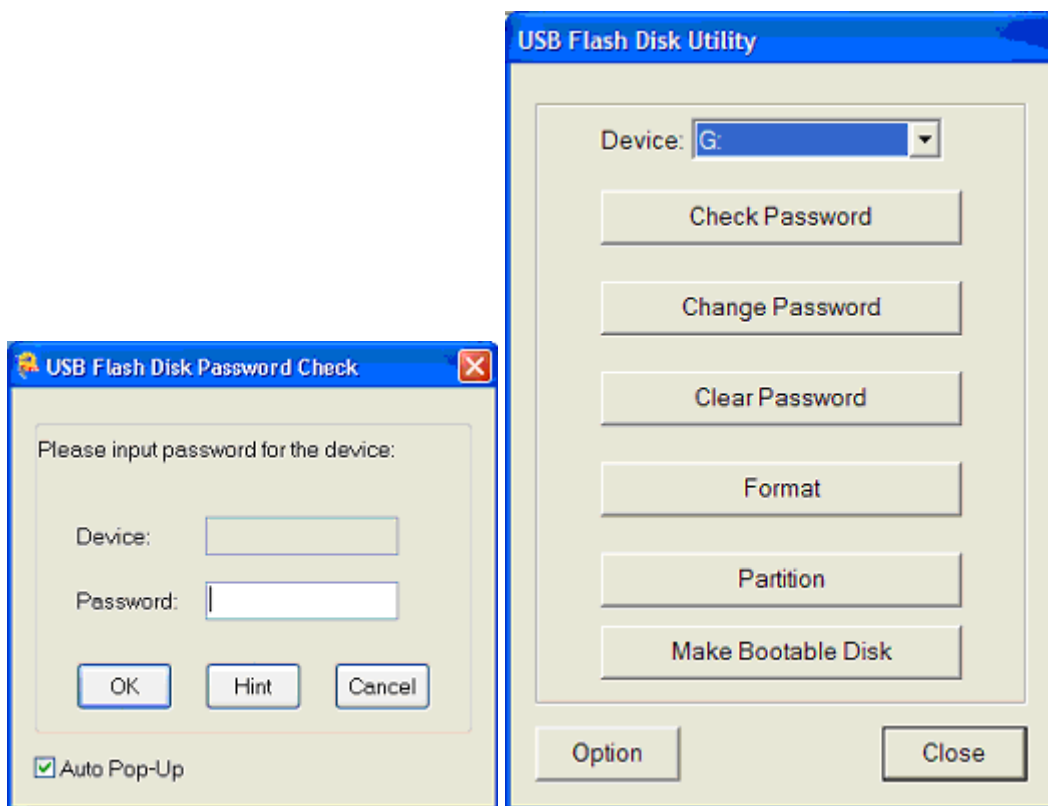
Running the USB Flash Disk Utility Program



Note: The USB Flash Disk Utility program only runs if it detects the correct device. The program will not respond if it detects a different factory configured device even if it is also of the same manufacturer device product.

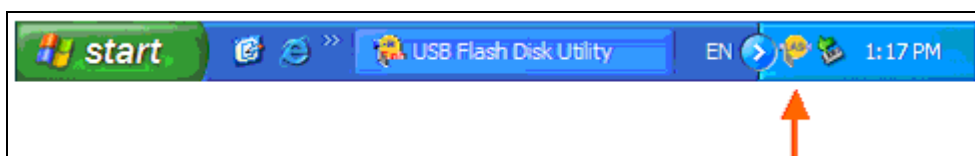
Follow the steps below to run the program:

1. In order to run the USB Flash Disk utility, it is required that you first plug-in the device and then double-click the program shortcut in the desktop screen. Otherwise, the program will not open if it cannot detect the proper device.
2. The USB Flash Disk Utility menu window will appear. The password features will only be enabled if you partition the device to two partition disks. If there is a password already set on the disk, the password check dialog box will first pop-up to prompt for the password before you can enter the main menu.



Note: The Password Check dialog box will only pop-up if this option is enabled and when you plug-in the device and there is a password set inside. You can disable this auto pop-up function by clicking the Option button in the main menu of the utility program.

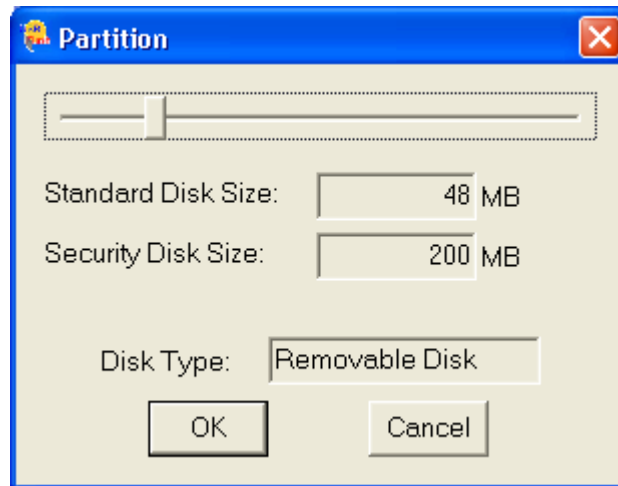
3. You will also see the USB Flash Disk utility icon on the right side of the taskbar every time you plug-in the device. You can also double-click this to open the utility. You can click on the Option button to disable the tray icon appearing on the taskbar when you plug in the device.



Partition



Before you can fully use the security features of the USB Flash Disk Utility, you would need first to create a two-partition disk of your device. The Partition button function allows you to define the partitions you want and how big the size of each partition will be. The Standard Disk partition will be your normal open disk while the Security Disk partition will be your secured disk that you can set a password to lock this partition.



1. Click Partition button from the Utility menu. You will see the Partition dialog box. Move the slide bar to adjust the partition size for standard and security disk. The security disk partition can be protected by password and is hidden until you activate the USB Flash Disk Utility program and enter the correct password.

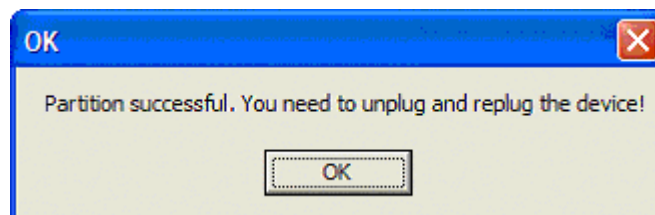


Note: For two-partition disks, you must set a minimum standard disk size of 8MB. If you already set a password before running partition and you set a one partition disk, the password will automatically be erased.



Note: If you set a password on the Secured Partition disk, you would also need to install the USB Flash Disk Utility on the computer where you will plug-in the device. Otherwise, you will not be able to access the Secured Partition disk on other computers.

2. Once you have decided how to partition your USB Flash disk, click Start to begin. A warning message will appear informing you that all data inside the disk will be erased. Click OK to continue. This process will also format the disk so you don't need to format the disk again. When finished, you must unplug and plug the device for the new partition to take effect.



Set Password

Set Password

This function allows you to set the password of your device. This button will only appear if you have a two-partition disk and do not have a password set yet. You can also set a password hint that will help you remember your password.

A screenshot of the 'Set Password' dialog box. It has a blue title bar with a yellow icon and a red close button. The dialog contains four text input fields: 'Old Password' (empty), 'New Password' (filled with asterisks), 'Confirm New Password' (filled with asterisks), and 'New Password Hint' (filled with 'mom's birthday'). Below the fields is a message: 'Maximum password length is 8 characters.' At the bottom are 'OK' and 'Cancel' buttons.

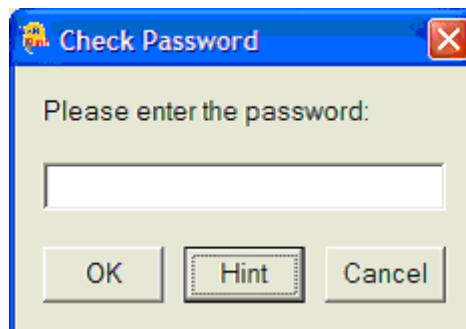
Note: This utility does not have a recovery method if you forgot your password. So it is very important that you set a password hint in order to help you easily remember the set password. Otherwise, you would have to send the device back to the manufacturer for reconfiguration.

Check Password

Check Password

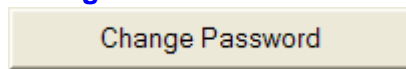
This function allows you to verify the set password of the USB Flash Disk device.

1. On the Check Password dialog box, enter the correct password and click OK. Click on the Hint button to pop-up the password hint or reminder.

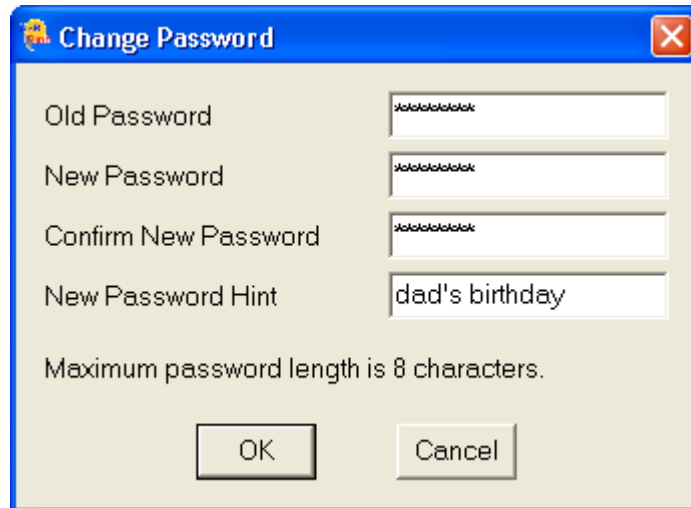
A screenshot of the 'Check Password' dialog box. It has a blue title bar with a yellow icon and a red close button. The dialog contains a single text input field with the prompt 'Please enter the password:'. Below the field are three buttons: 'OK', 'Hint', and 'Cancel'.

2. If the password is correct, the dialog box will closed automatically and return to the main menu. If the password is incorrect, a password incorrect dialog box will appear.

Change Password

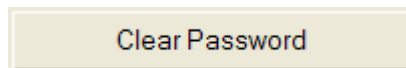


This function allows you to change the password and password hint of your USB Flash Disk device. It is the same like setting a password except you need first to enter the correct old password.

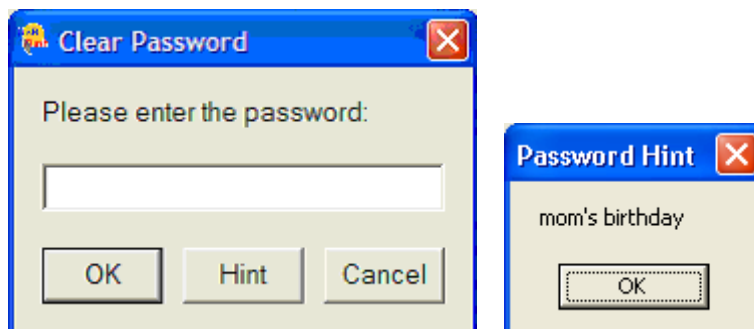


Note: The Change button will only appear if you already have a password set on the USB Flash Disk device. If there is no password, the Set Password button will instead appear or toggle in this set bar.

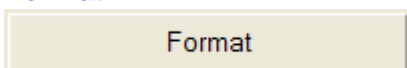
Clear Password



This function allows you to clear the password of your Hi-Speed USB Flash Disk. Just enter the old or existing password in the Clear Password dialog box. You can click the Hint button to show the password reminder. After you click OK and if the password you entered is correct, you will go back to the main menu and the password is already cleared. If the password you entered is incorrect, a password incorrect dialog box will appear.

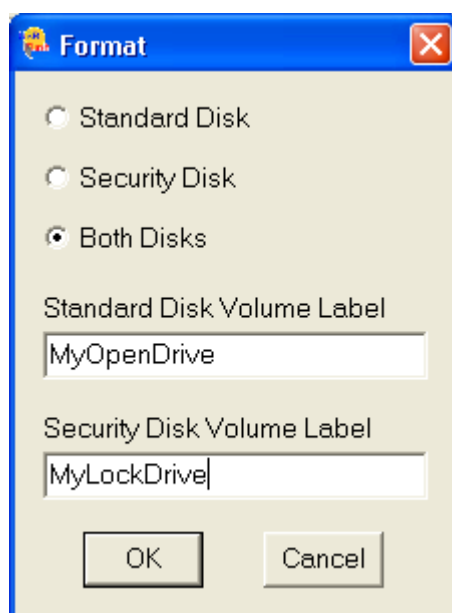


Format



This allows you to format and label the partition disks. Follow these steps:

1. Click on **Format** and enter the correct password if prompted.
2. If you have two partitions, you will see the dialog box below. Click on which partition (Standard Disk or Security Disk) you want to format. If you want to format both partitions, just click Both Disks. You can also enter the disk volume label if you prefer. Then click **OK**. If you have one partition, you will only see the Standard Disk option available. Enter the disk volume label if you prefer. Then click **OK** to start formatting the disk.



3. When finished, a window message will appear telling you that format disk is successful. You do not need to unplug and replug the device after formatting. Your device drives will then also show the new volume labels in My Computer.

Name ▲	Type
3½ Floppy (A:)	3½-Inch Floppy Disk
Local Disk (C:)	Local Disk
Local Disk (D:)	Local Disk
CD-RW Drive (E:)	CD Drive
DATA (F:)	Local Disk
MYOPENDRIVE (G:)	Removable Disk
MYLOCKDRIVE (H:)	Removable Disk



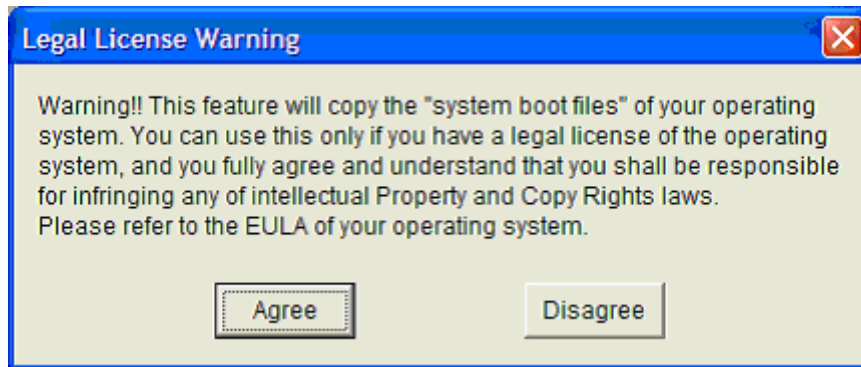
Note: For Removable Disk devices, the volume labels of your device will not appear in My Computer or Windows Explorer under Windows 98 or Windows ME. You need to right-click the drive and click Properties to see the volume label.

Make Bootable Disk

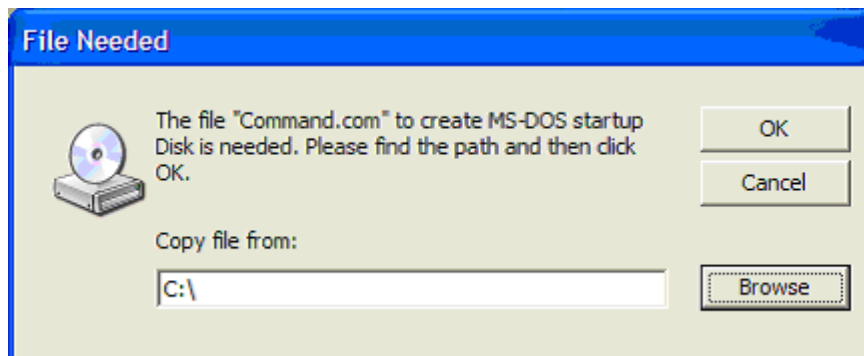
Make Bootable Disk

This function allows you to create a bootable device. In order to create a bootable USB Flash Disk device, you would need to format the device using the USB Flash Disk Utility and copy the system files from your installed operating system. You would also need to make sure first if the computer you want to use fully supports boot from USB device like USB-ZIP, USB-FDD, or USB-HDD.

1. Plug-in the device and run the USB Flash Disk Utility program. Make sure to backup your data files first before trying to create a boot device.
2. Click Format button to format the device. Formatting your USB Flash device using Windows format does not guarantee that your device will be able to boot.
3. After format is complete, click on the Make Bootable Disk button. A warning message will appear informing you of legal license regarding copyrights. Click Agree to continue.



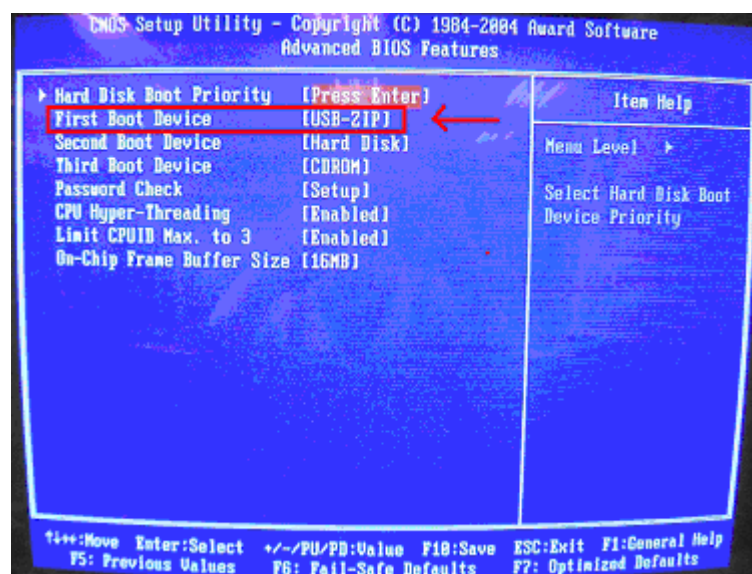
4. If you are using Windows XP or Windows 2000, you will need to provide the correct path directory where the system files (**COMMAND.COM** and **IO.SYS**) are stored. The files would normally be stored on your root drive directory C:\ or on your Windows system directory C:\Windows\system32. After you have copied the needed files, your device can now be used as a bootable disk. You can also continue to store files inside the disk.



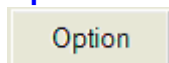
Note: The manufacturer of this device does not hold any responsibilities over breach of license stated in the End-User License Agreement (EULA) of your operating system regarding copying the system files to your USB Flash Disk device. You must hold a legal license or purchase of the operating system you are using.

To boot your computer from your USB Flash Disk device:

1. Power on or restart your computer with the bootable USB Flash Disk device plugged into the USB port.
2. During power on, run the BIOS Setup program of your computer. Refer to your computer or motherboard user's manual on how to activate the BIOS Setup program.
3. Check if the BIOS Setup program includes Boot Options for USB devices like USB-ZIP, USB-FDD, or USB-HDD. Set the first boot option to USB-ZIP and save CMOS settings. Exit the BIOS Setup program and check if your computer can boot from your USB Flash Disk device. You can also try to set USB-FDD or USB-HDD if the USB-ZIP does not work. Please contact your computer or motherboard maker for technical support on USB boot device.

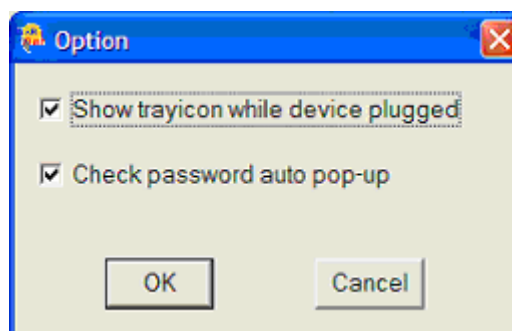


Option



This button allows you to set the options for the following:

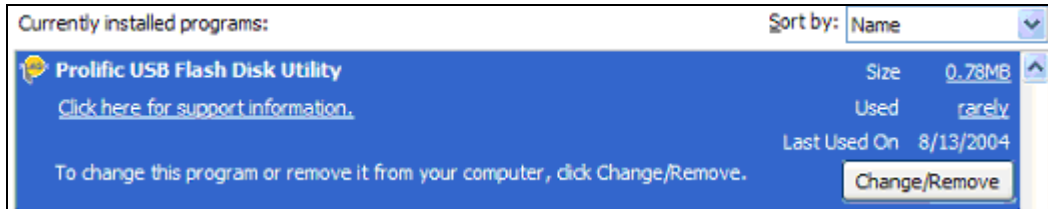
- Showing the program icon on the Windows taskbar (system tray) whenever you plug-in the device.
- Auto pop-up the check password dialog box whenever you plug-in the device and there is a password set.



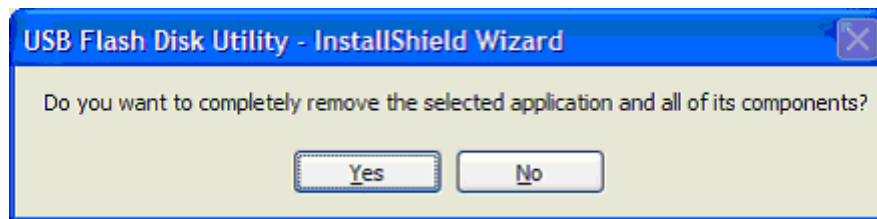
Uninstalling the USB Flash Disk Utility

To uninstall the USB Flash Disk Utility program:

1. Go to Control Panel and double-click on Add or Remove Programs.
2. Look for the USB Flash Disk Utility and click Change/Remove button.



3. Setup will prompt you whether you want to uninstall. Click OK to continue.



4. After Setup has completely uninstalled the utility program, it will prompt you that maintenance is complete. Windows may prompt you also to restart your computer. Click Yes to do so.

Disclaimer

All the information in this document is subject to change without prior notice. The manufacturer does not make any representations or any warranties (implied or otherwise) regarding the accuracy and completeness of this document and shall in no event be liable for any loss of profit or any other commercial damage, including but not limited to special, incidental, consequential, or other damages.

No part of this document may be reproduced or transmitted in any form by any means without the express written permission of the manufacturer.

All brand names and product names used in this document are trademarks or registered trademarks of their respective holders.